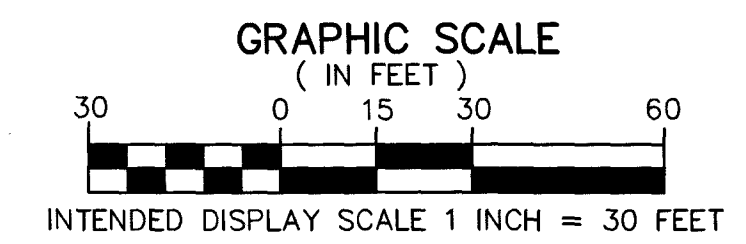


THIS INSTRUMENT PREPARED BY  
DAVID P. LINDLEY  
OF  
**CAULFIELD & WHEELER, INC.**  
SURVEYORS - ENGINEERS - PLANNERS  
7900 GLADES ROAD, SUITE 100  
BOCA RATON, FLORIDA 33434 - (561)392-1991  
CERTIFICATE OF AUTHORIZATION NO. LB3591

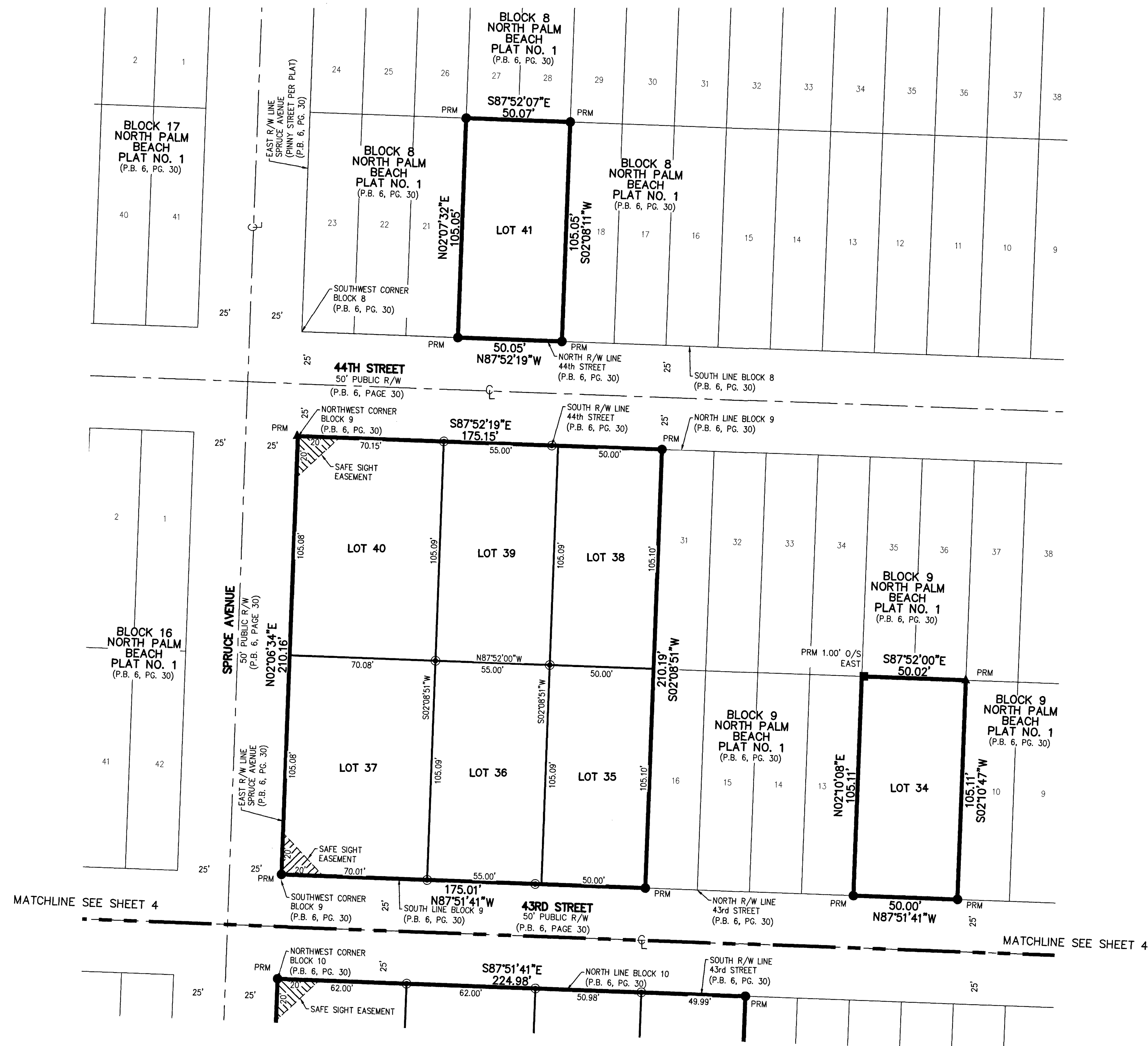
# NORTH PALM BEACH PLAT NO. 1, BLOCKS 8-12 REPLAT

A REPLAT OF LOTS 19 AND 20, BLOCK 8, LOTS 11 THROUGH 12, 17 THROUGH 23, AND 24 THROUGH 30, BLOCK 9, LOTS 11 THROUGH 16, AND 24 THROUGH 32, BLOCK 10, LOTS 13 THROUGH 18, 21, 22, 25, 26, AND 31 THROUGH 36, BLOCK 11, AND ALL OF BLOCK 12, NORTH PALM BEACH PLAT NO. 1, AS RECORDED IN PLAT BOOK 6, PAGE 30, OF THE PUBLIC RECORDS OF PALM BEACH COUNTY, FLORIDA, LYING IN SECTIONS 4 AND 9, TOWNSHIP 43 SOUTH, RANGE 43 EAST, CITY OF WEST PALM BEACH, PALM BEACH COUNTY, FLORIDA.



21

SHEET 3 OF 5



## LEGEND/ABBREVIATIONS:

- LB - LICENSED BUSINESS
- O.R.B. - OFFICIAL RECORDS BOOK
- P.B. - PLAT BOOK
- PG(S). - PAGE(S)
- P.O.B. - POINT OF BEGINNING
- P.L.S. - PROFESSIONAL LAND SURVEYOR
- P.S.M. - PROFESSIONAL SURVEYOR & MAPPER
- R/W - RIGHT-OF-WAY
- CL - CENTERLINE
- - SET IRON ROD AND CAP, STAMPED "LB 1"
- ▲ PRM - INDICATES SET PERMANENT REFERENCE MONUMENT, NAIL WITH DISC, STAMPED "PRM C&W LB3591", UNLESS NOTED OTHERWISE.
- PRM - DENOTES PERMANENT REFERENCE MONUMENT 4"x 4"x 24" CONCRETE MONUMENT WITH ALUMINUM DISK STAMPED "C&W PRM LB3591" UNLESS OTHERWISE NOTED
- PRM - DENOTES PERMANENT REFERENCE MONUMENT 5/8"x18" IRON ROD WITH ALUMINUM DISK STAMPED "C&W PRM LB3591" UNLESS OTHERWISE NOTED
- ▨ - DENOTES SAFE SIGHT EASEMENT